

PŘEKLAD

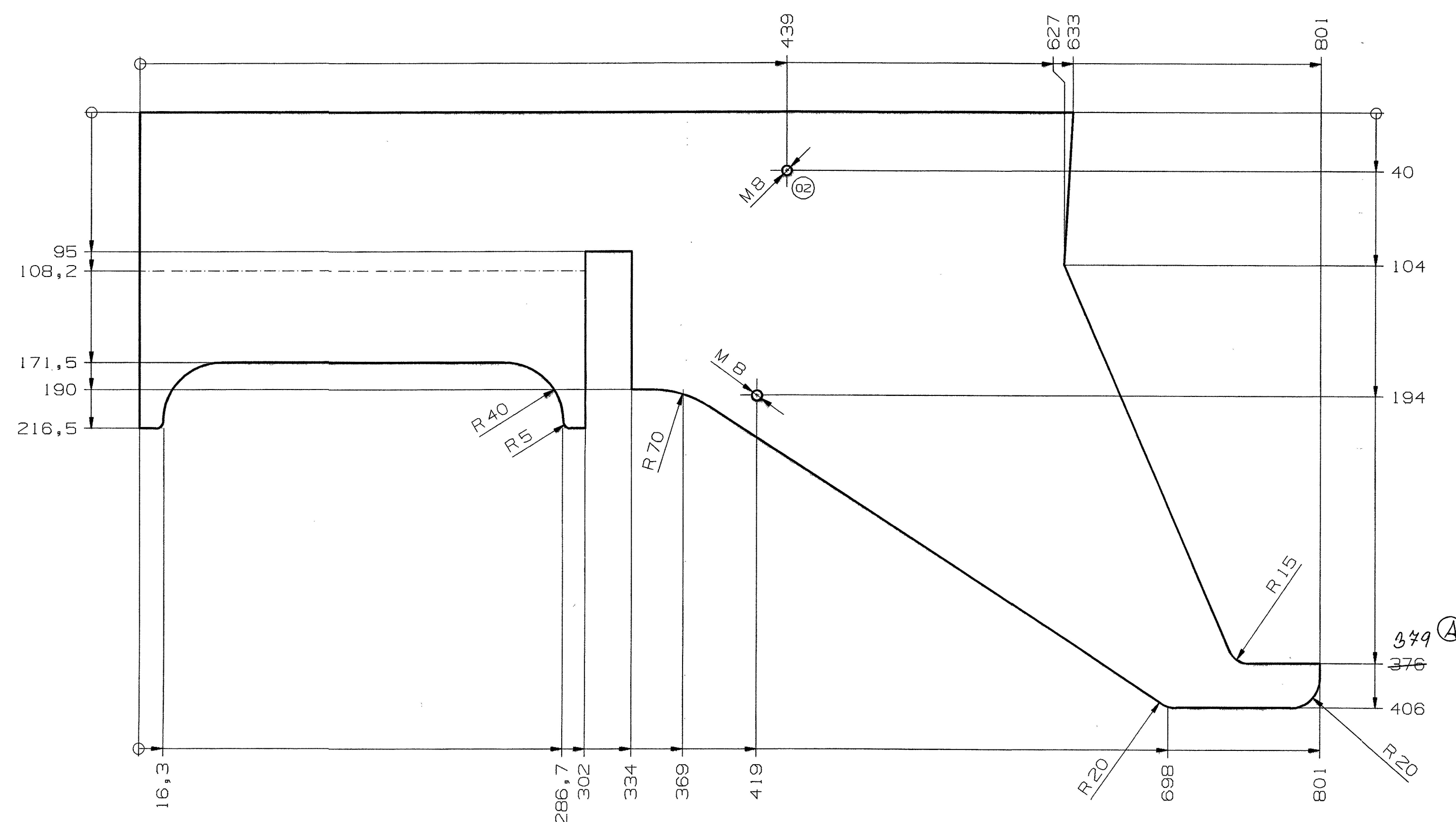
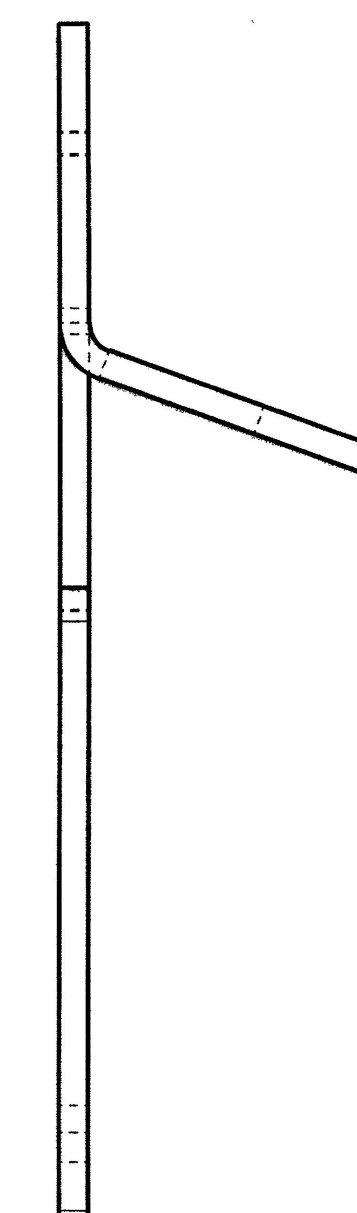
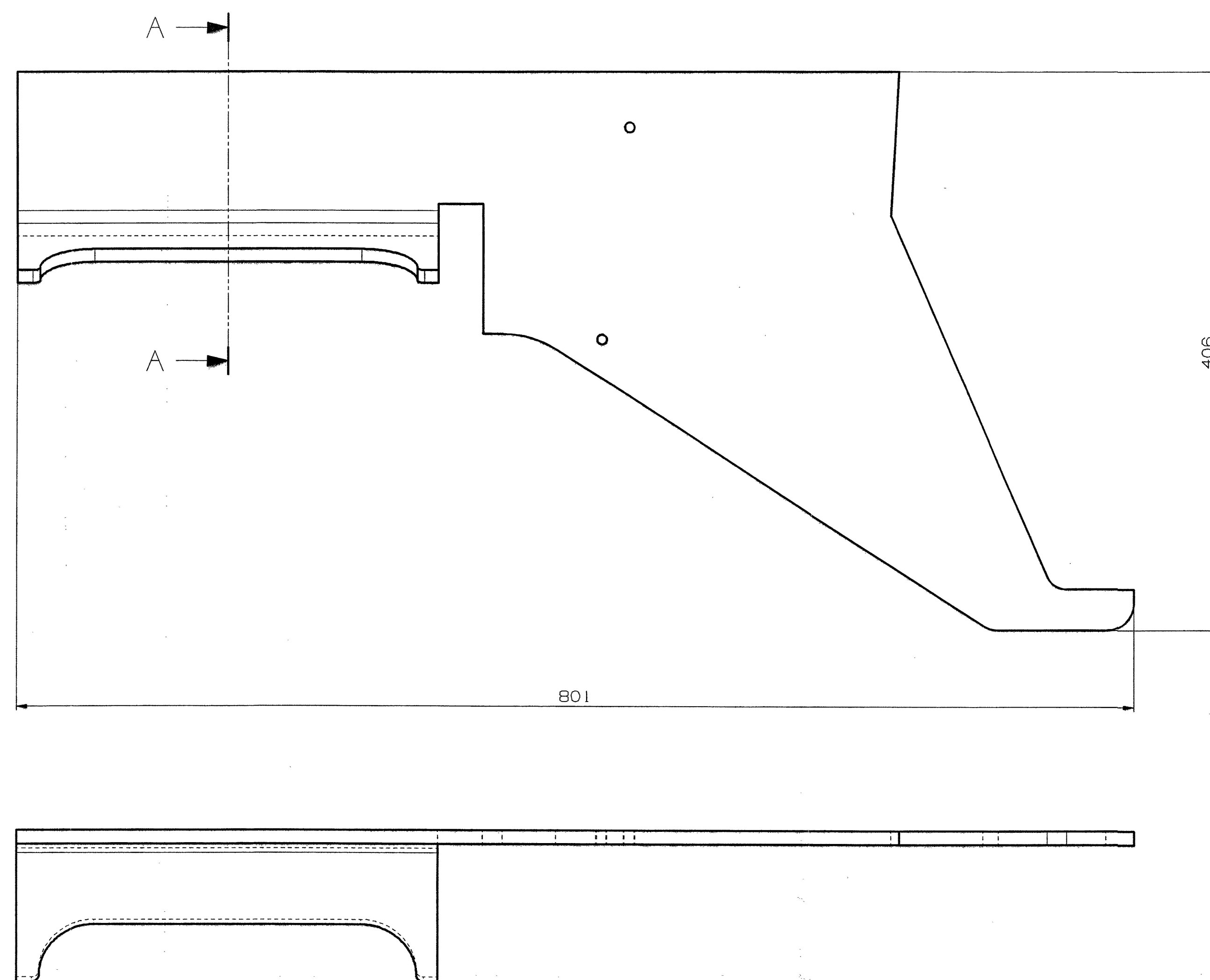
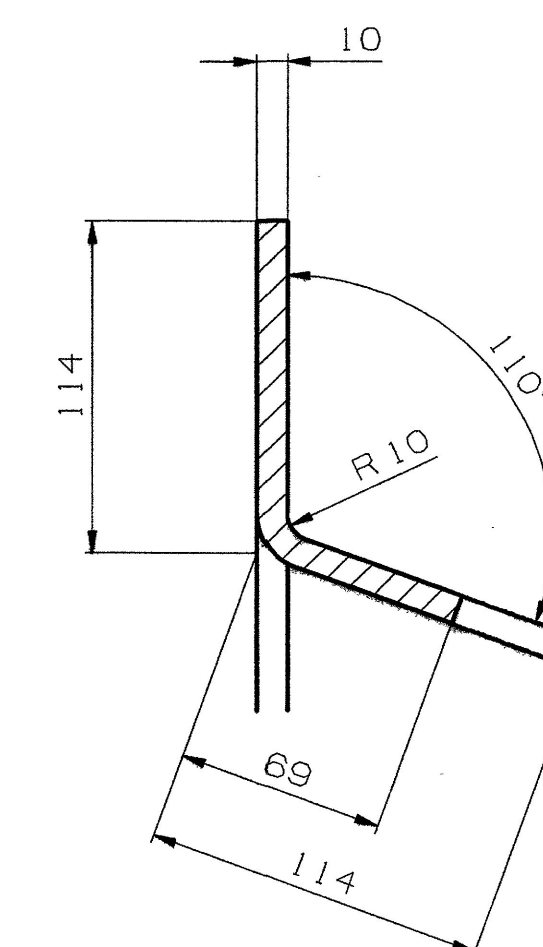
dn: 3 07. 2014

PROVEDLA

P. Nováková

*[Signature]*

SECTION A-A



- 2 - 03 - 2016

ARCHIV

3

① ZM/16/00253 ZMĚNA KÓTY 376 NA 379 2.3.2016 ing. J. Nová

Screw threads tolerances: ISO 965-2 G6/gH		General tolerances for surface/line cutting: DIN EN ISO 9013 - II B		General tolerances for laser cutting: DIN 2310 - 5 - L up to 3mm / -HK over 3mm		General tolerances for milling / bending: DIN 6130 - 2 - m		APPROVED FOR		Nullserienfrei (F3)	
Welding Construction according to "Werknorm 4.3"		Surface Quality according to "Werknorm 140"		Theor. Weight according to "KR001-2003"		Material according to "Werknorm 51"		GEWINDE M8 x 10		KRAU.SCHMIDT	
TO ADD THREAD M8		Name		Date		Count		Change		Name	
Scale		Original-Size		Standard Color		Name		Date		Theor. Weight	
1:2,5		A1		KRAU.SCHMIDT		25.04.2013		Material: B510		Theor. Weight: 121	
Band Tolerance see: DIN 6130 - 2 - m		Welding Tolerance see: DIN EN ISO 1990-BF		General Tolerance see: DIN ISO 2768 - m		Surface Condition see: DIN ISO 182		Laser-Cut Tolerance see: DIN 2310-5-L up to 3mm / -HK over 3mm		Copyright reserved to ISO 15016	
Additional Text		Mat-Nr.		Doc-Nr.		2000132255		Version		02	